



# 13th Annual Meeting of the Collaborative Group of the Americas on Inherited Colorectal Cancer

October 17-18, 2009 • Hilton Hawaiian Village • Honolulu, Hawaii  
Register online at <https://www.utah.edu/conferences/cgaicc>

First Name \_\_\_\_\_ Last Name \_\_\_\_\_

Degree \_\_\_\_\_ Institution \_\_\_\_\_

Address \_\_\_\_\_

City \_\_\_\_\_ State \_\_\_\_\_ Zip \_\_\_\_\_

Country \_\_\_\_\_

Phone \_\_\_\_\_ Fax \_\_\_\_\_

Email \_\_\_\_\_

### REGISTRATION\*

- MD PhD. - CGA member **\$300**
  - MD PhD.- CGA non-member **\$425**
  - GC, Nurse, Coordinator - CGA member **\$200**
  - GC, Nurse, Coordinator - CGA non-member **\$275**
- Yes, I require Vegetarian Meals during the conference
- Registration includes lunch Saturday & Sunday and 1 ticket to the Lifetime Achievement Award Dinner, October 17, 2009.**

### ABSTRACT DETAILS\*\*

Abstract Deadline is July 1, 2009.  
Submit abstracts to:  
[steve.erdman@nationwidechildrens.org](mailto:steve.erdman@nationwidechildrens.org)

### PAYMENT METHOD

Payment must be received prior to admittance to the conference.  
All fees are payable in U.S. dollars.

Total Conference Registration Amount:

- Visa
- MasterCard
- American Express
- Check

Card # \_\_\_\_\_ Expiration Date: \_\_\_\_/\_\_\_\_/\_\_\_\_

Name on Card \_\_\_\_\_

### FOR MORE INFORMATION

Conference & Event Management  
**801-587-2980, Fax 801-587-2990**  
[www.utah.edu/conferences/cgaicc](http://www.utah.edu/conferences/cgaicc)

### SEND CHECK OR PURCHASE ORDER TO:

University of Utah Conference & Event Management  
110 So. Fort Douglas Blvd.  
Salt Lake City, UT 84113-5036

### IN CASE OF CANCELLATION

a refund (less a \$50 cancellation fee - provided that withdrawal is requested in writing) will be made. No refunds will be given after September 21, 2009. The University of Utah complies with the Disabilities Act by providing qualified individuals with disabilities access to University program, services and activities. Reasonable prior notice is needed to arrange accommodations. Please call 801-587-2980 to request an accommodation.

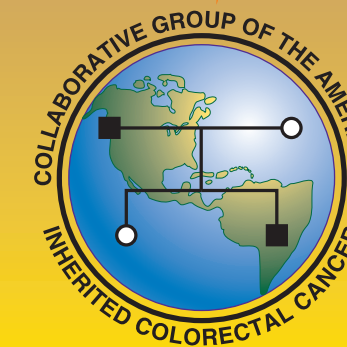
\*Not a member of CGA? Join CGA to get membership discount [www.cgaicc.com](http://www.cgaicc.com)

\*\*More abstract information can be found at [www.cgaicc.com](http://www.cgaicc.com)

Conference & Event Management  
University of Utah  
110 South Fort Douglas Boulevard  
Salt Lake City, UT 84113



# Collaborative Group of the Americas on Inherited Colorectal Cancer (CGA-ICC)



## 13th Annual Meeting

Hilton Hawaiian Village  
Honolulu, Hawaii

October 17-18, 2009

# Speakers

<b>Mary Bronner MD</b> <i>Cleveland Clinic</i>	<b>Carol Durno MD</b> <b>MSc FRCPc</b> <i>Mt Sinai Hospital for Sick Children</i>	<b>Jason Hall MD</b> <i>Lahey Clinic</i>	<b>Steven Lipkin MD PhD</b> <i>University of California Irvine</i>	<b>Wade S. Samowitz MD</b> <i>University of Utah</i>	<b>Scott T. Walters PhD</b> <i>The University of Texas School of Public Health</i>
<b>David R. Byrd MD</b> <i>University of Washington</i>	<b>C. Neal Ellis MD</b> <i>University of South Alabama</i>	<b>Spring Holter MS</b> <i>Mt Sinai Hospital</i>	<b>Patrick Lynch MD JD</b> <i>University of Texas M.D. Anderson Medical Center</i>	<b>Michael D. Saunders, MD</b> <i>University of Washington Medical Center</i>	<b>Thomas Weber MD</b>
<b>James Church MD</b> <b>FRACS FACS</b> <i>Cleveland Clinic</i>	<b>Steven Erdman MD</b> <i>The Ohio State University Nationwide Children's Hospital</i>	<b>Matthew Kalady MD</b> <i>Cleveland Clinic</i>	<b>Elaine Lyon PhD</b> <i>University of Utah</i>	<b>Leigha Senter MS</b> <i>The Ohio State University</i>	<b>Paul Wise MD</b> <i>Vanderbilt University Medical Center</i>
<b>David Huntsman MD</b> <b>FRCPC FCCMG</b> <i>University of British Columbia</i>	<b>Richard Fishel PhD</b> <i>The Ohio State University</i>	<b>Pardeep Kaurah MS</b> <i>University of British Columbia</i>	<b>Kim L. McBride MD PhD</b> <i>The Ohio State University Nationwide Children's Hospital</i>	<b>Elena Stoffel MD MPH</b> <i>Brigham &amp; Women's Hospital</i>	<b>Joanne Young PhD</b> <i>Queensland Medical Center</i>
	<b>Loic Le Marchand MD PhD</b> <i>University of Hawaii</i>	<b>Scott Kuwada MD</b> <i>University of Hawaii</i>	<b>Susan Peterson PhD MPH</b> <i>University of Texas M.D. Anderson Medical Center</i>	<b>Jeffrey J. Swensen PhD</b> <b>FACMG</b> <i>University of Utah</i>	

# Schedule

<b>Friday October 16th 2009</b>	
4:00PM-6:00PM	<b>REGISTRATION</b>
<b>Saturday October 17th 2009</b>	
7:00AM	<b>REGISTRATION</b>
8:00AM	<b>WELCOME</b> <i>Wade S. Samowitz MD CGA President</i>
8:05AM	<b>VARIANTS OF UNKNOWN SIGNIFICANCE</b> <i>Moderator: Elaine Lyon PhD</i> <b>MAPP MMR: Classification of DNA Mismatch Repair Missense Variants</b> <i>Steven Lipkin MD, PhD</i> <b>Family Concordance Studies and Bayesian Analysis</b> <i>Elaine Lyon PhD</i> <b>Mutations that Affect mRNA Splicing</b> <i>Jeffrey Swenson PhD</i> <b>Panel Discussion</b>
9:30AM	<b>HERRERA LECTURE</b> <i>Introduction: Thomas Weber MD</i> <b>Mechanism of mismatch repair and its role in tumorigenesis</b> <i>Richard Fishel PhD</i>
10:00AM	<b>BREAK</b>
10:30AM	<b>SURGICAL CROSSFIRE: DECISION-MAKING FOR THE TREATMENT OF HEREDITARY CRC &amp; ASSOCIATED CONDITIONS</b> <i>Moderator: Paul Wise MD</i> <b>Desmoid disease in FAP: Operative versus nonoperative therapy</b> <i>James Church MD vs C.Neal Ellis MD</i> <b>Hyperplastic polyposis: Operative versus nonoperative therapy</b> <i>Matthew Kalady MD vs Scott Kuwada MD</i> <b>Familial polyposis: The rectum must stay versus the rectum must go</b> <i>Jason Hall MD vs Thomas Weber MD</i> <b>Panel Discussion</b>
12:00PM	<b>LUNCH</b>
1:00PM	<b>PODIUM PRESENTATIONS I</b> <i>Moderator: Steve Erdman MD</i>
2:10PM	<b>HOT TOPICS - REVIEW OF CUTTING EDGE ARTICLES</b> <i>Introduction: Steve Erdman MD</i> <b>Behavioral Sciences</b> <i>Susan Peterson PhD, MPH</i>
2:30PM	<b>PEDIATRICS</b> <i>Moderator: Steve Erdman MD</i> <b>The Role of the PTEN Gene in Autism</b> <i>Kim McBride MD, PhD</i> <b>Juvenile polyyps.... a new focus</b> <i>Carol Durno MD, MSc, FRCPc</i> <b>Panel Discussion</b>
3:30PM	<b>BREAK</b>
4:00PM	<b>CHALLENGING CASES</b> <i>James Church MD</i>

5:00PM	<b>ADJOURN</b>
6:00PM	<b>RECEPTION</b> - Poster Presentation
7:00PM	<b>DINNER</b> <i>Introduction: Wade S. Samowitz MD</i> <b>Lifetime Achievement Award-Jeremy Jass</b> <b>Tribute to Jeremy Jass</b> <i>Joanne Young PhD</i>

<b>Sunday 10/18/2009</b>	
8:00AM	<b>HEREDITARY PANCREATIC CANCER</b> <i>Moderator: Mary Bronner MD</i> <b>Genetic Counseling</b> <i>Spring Holter MS</i> <b>EUS/ERCP Screening</b> <i>Michael D. Saunders MD</i> <b>Specialized Surgical Technique &amp; Pathology</b> <i>Mary Bronner MD</i> <b>Panel Discussion</b>
9:30AM	<b>JASS LECTURE</b> <i>Introduction: Wade S. Samowitz MD</i> <b>Genome Wide Association Studies</b> <i>Loic Le Marchand MD, PhD</i>
10:00AM	<b>BREAK</b>
10:30AM	<b>MAXIMIZING BRIEF INTERVENTIONS TO IMPROVE CANCER SCREENING ADHERENCE</b> <i>Scott T. Walters PhD</i> <i>Introduction: Wendy Kohlman MS, CGC</i>
11:30AM	<b>HOT TOPICS - REVIEW OF CUTTING EDGE ARTICLES</b> <i>Introduction: Steve Erdman MD</i> <b>Basic Sciences</b> <i>Patrick Lynch MD, JD</i>
12:00PM	<b>LUNCH</b> <b>Election</b> <b>Business Meeting</b>
1:00PM	<b>PODIUM PRESENTATIONS II</b> <i>Moderator: Elena Stoffel MD, MPH</i>
2:00PM	<b>A RATIONAL CHEMOPREVENTION STRATEGY FOR PEUTZ-JEGHERS SYNDROME</b> <i>Scott Kuwada MD</i> <i>Introduction: Elena Stoffel MD, MPH</i>
2:30PM	<b>BREAK</b>
3:00PM	<b>HEREDITARY GASTRIC CANCER</b> <i>Moderator: Spring Holter MS, CGC</i> <b>Pathology &amp; Research</b> <i>David Huntsman MD</i> <b>Genetics &amp; Genetic Counseling</b> <i>Pardeep Kaurah MS</i> <b>Panel Discussion</b>
4:00PM	<b>HOT TOPICS - REVIEW OF CUTTING EDGE ARTICLES</b> <i>Introduction: Steve Erdman MD</i> <b>Clinical Sciences</b> <i>Leigha Senter MS</i>
4:30PM	<b>ADJOURNMENT &amp; CLOSING COMMENTS</b> <i>Wade S. Samowitz MD</i>

## Accreditation

This activity has been planned and implemented in accordance with the Essential Areas and policies of the Accreditation Council for Continuing Medical Education (ACCME) through the joint sponsorship of the Utah Medical Association (UMA) and the Collaborative Group of the Americas (CGA). The UMA is accredited by the ACCME to provide continuing medical education for physicians.

## Designation

The UMA designates this educational activity for a maximum of 12 *AMA PRA Category 1 Credits™*. Physicians should only claim credit commensurate with the extent of their participation in the activity.

## ADA

The Utah Medical Association complies with the Americans with Disabilities Act by providing qualified individuals with disabilities to UMA programs and activities. A request for accommodation can be made by calling (801) 587-2980. Reasonable prior notice is required.

## Faculty Disclosure

UMA adheres to ACCME Standards regarding the industry of continuing medical education, and disclosure of faculty & commercial supporter relationships (if any) will be made known at the activity.

## Location & Accommodations

This course will be held at the Hilton Hawaiian Village Beach Resort & Spa in Honolulu, Hawaii preceding the ASHG Conference. Reservations can be made online at <https://www.utah.edu/conferences/cgaicc> or by calling 800-445-8667 using the code AHF. Reservations must be made by September 16, 2009 to get the discounted group rate.

## Working Groups

Working Groups will meet on Sunday morning from 7-8 am at location designated by working group leader. Contact your leader for additional information.

## CGA 2009 Council

<b>Wade S. Samowitz MD</b>	<i>President</i>	University of Utah
<b>James Church MD</b>	<i>Past President</i>	Cleveland Clinic
<b>Steve Erdman MD</b>	<i>President-Elect Council member at Large (2006-9)</i>	The Ohio State University
<b>Elena Stoffel MD MPH</b>	<i>Council Member at Large</i>	Brigham & Women's Hospital
<b>Leigha Senter MS</b>	<i>Council Member at Large</i>	The Ohio State University
<b>Wendy Kohlmann MS</b>	<i>Council Member at Large</i>	Huntsman Cancer Institute
<b>Francisco Lopez-Kostner MD</b>	<i>SA Member at Large</i>	Clinica Las Condes
<b>Paul E. Wise MD</b>	<i>Council Member at Large</i>	Vanderbilt University Medical Center
<b>C. Neal Ellis MD</b>	<i>Council Member at Large</i>	University of South Alabama
<b>Spring Holter MS CGC</b>	<i>Council Member at Large</i>	Mt. Sinai Hospital
<b>Susan Fay</b>	<i>Administrative Assistant</i>	Cleveland Clinic